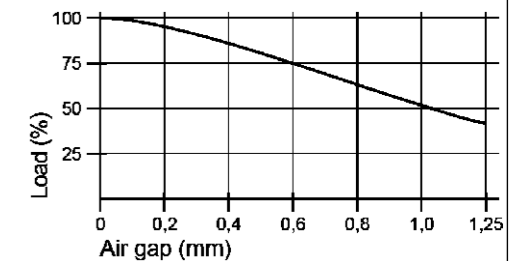
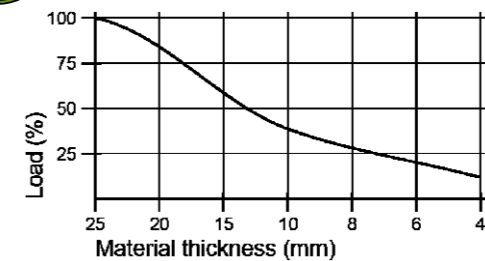
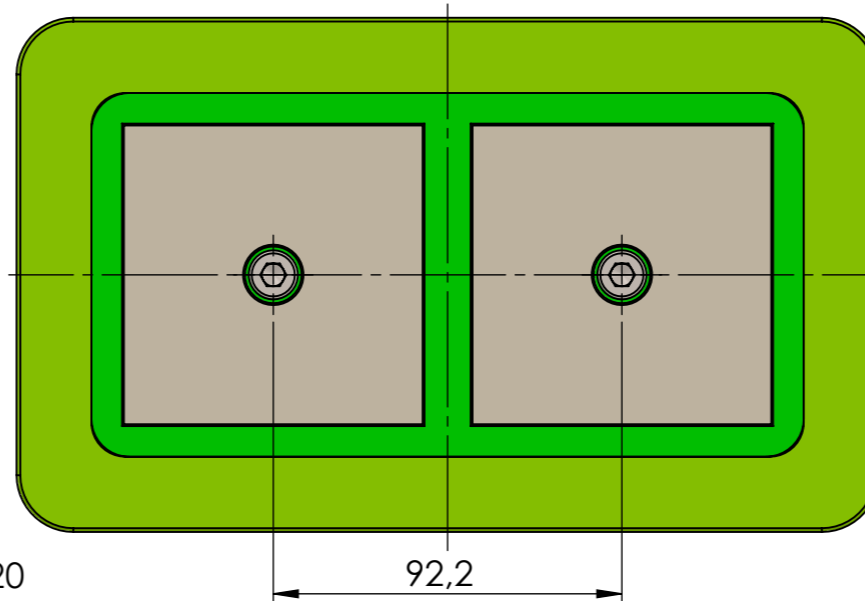
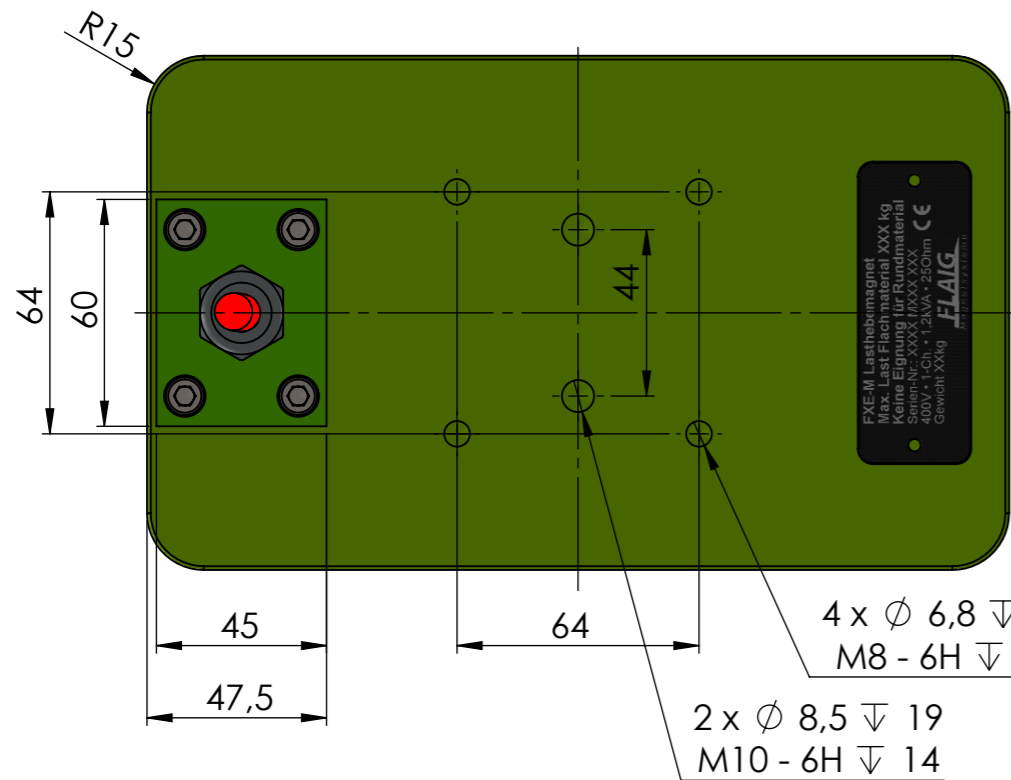
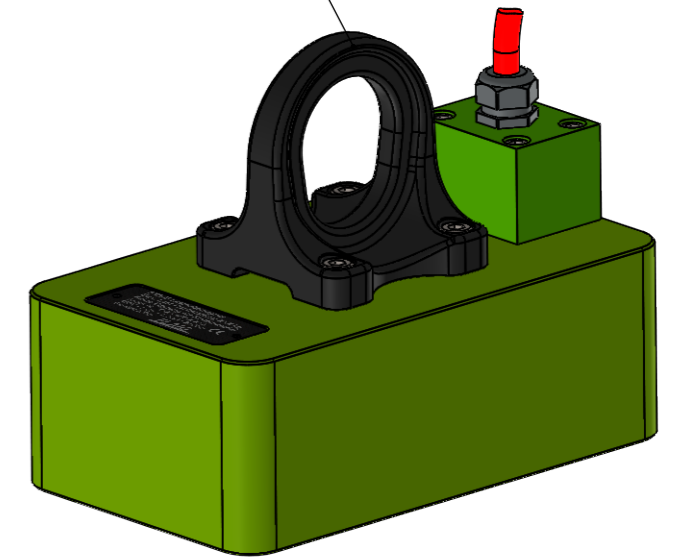


Crane lifting eye optional  
Article number: 911010605



4 x  $\phi$  6,8  $\nabla$  20  
M8 - 6H  $\nabla$  16  
2 x  $\phi$  8,5  $\nabla$  19  
M10 - 6H  $\nabla$  14

Specification FXE-M 500-80		Schutzvermerk nach DIN ISO 16016 beachten! Nachdruck nur mit unserer Genehmigung!		3,2 / -0,05 / -0,2 tolerance		material:		weight: 17.30	
Nominative Force: 18kN		lifting capacity EN 13155/WLL		ISO 7168 M		drawing no.:		0017420	
Materialthickness >25mm (100%)		500kg		date		name		description: <b>FXE-M 500-80</b>	
2,4kVA				drawn 05.05.2022		TW			
U: 380-480V Pulse		Protection Class IP 65		appr. 11.05.2022		TW			
R: 11,4 $\Omega$		Protectiv Earth SK I						part no.:	
								10610502	
								sheet 1 / 1	
								A3	
								scale: 1:2	
								Status: Freigegeben	

